

台風のリフサイクルに対応した雲画像

As of 050913

Typhoon
Model



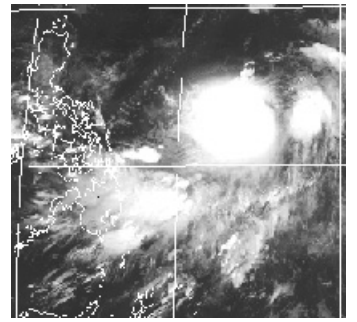
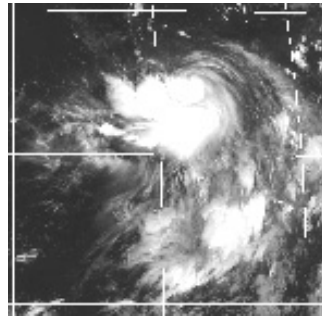
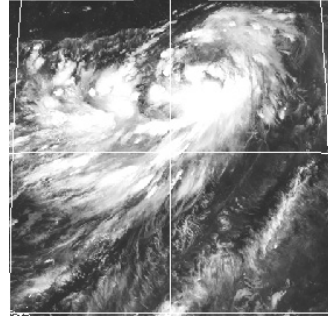
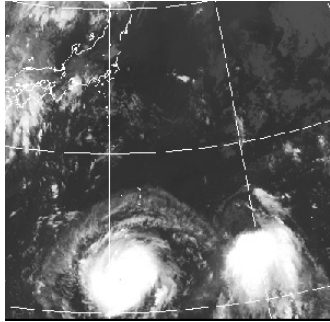
T0511 Mawar

T0513 Talim

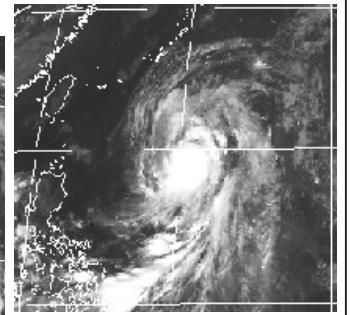
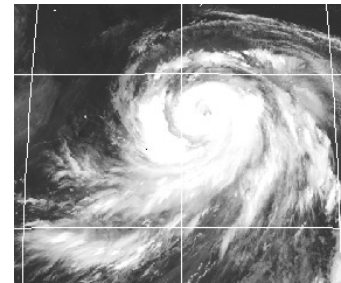
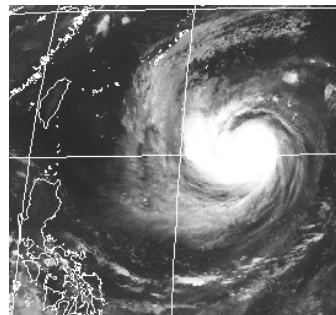
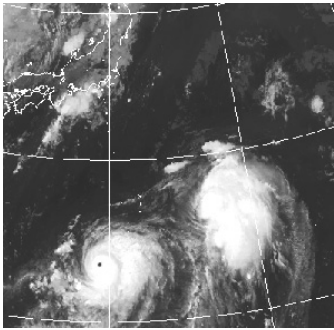
T0514 Nabi

T0515 Khanun

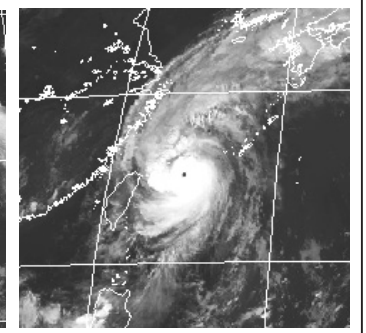
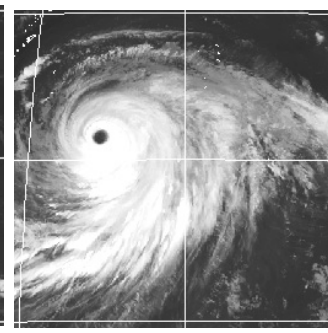
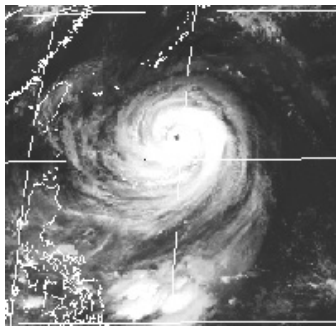
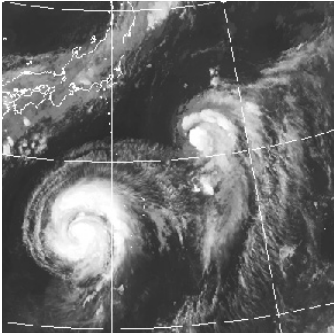
発生期 CI=2.5~3.5



発達期 CI=3.5~8.0



最盛期 CI=4.5~8.0



衰弱期 CI=3.5~2.5

